

# Learning journey so far...

- Prehistoric footprints at Formby (**5000 BC**)
- Vikings (**900 AD**)
- Lifeboat Station (**1776 AD**)
- Railway (**1848 AD**)
- Formby by the sea (**1875 AD**)
- Formby asparagus (**1907 AD**)
- Formby Bypass (**1937 AD**)
- Formby National Trust (**1967 AD**)

# National Trust Formby





# What makes Formby so special?



<https://www.youtube.com/watch?v=0YWCyhqiUks>



# Timeline of the National Trust across the United Kingdom...

- A realisation that our wonderful coastline needed to be protected led to the formation of a fundraising campaign entitled 'Enterprise Neptune'.
- The project owns some of the UK's iconic coasts

**1965** – Launch of the 'Enterprise Neptune' campaign

**1973** – Responsible for 338 miles (544 km) of British coastline.

**1995** – 545 miles (877 km) of British coastline.

**2009** - 710 miles (1,140 km) of British coastline By its 50th anniversary in May.

**2015** - 775 miles (1,247 km) of British coastline (50<sup>th</sup> anniversary of NT).

**2023** – Over 780 miles (1,260 km) covering an area of 48,800 hectares (121,000 acres).  
Approximately 10% of the total UK coastline.

# How the National Trust came to Formby in 1967...

- The arrival of the National Trust in Formby in 1967 arose from a national campaign to protect and preserve our national coastline from being developed or industrialised. The fundraising campaign was entitled '*Enterprise Neptune*'.
- Prior to the final agreement with the National Trust, there were meetings with interested parties and public meetings to ensure that discussions reached a positive outcome.
- Local opinion was fully reported in the *Formby Times* newspaper which showed how local residents felt it would be a positive development for the NT to take over the running of the shore around Formby Point.
- The National Trust were required to raise £20,000 through 'Enterprise Neptune' to buy the northern section of the Formby shore and sandhills.

# A key person in securing the National Trust purchase...

- The regional organiser for the NT, C.H.D Acland (known to his friends as 'Cubby'), was a big influencer in convincing the public and the Formby Civic Society that allowing the National Trust to take over Formby's shore was the right way forward.
- Cubby Acland presented a series of slides (*there was no such thing as PowerPoint in 1966*) showing how National Trust went about its business in other parts of the country.
- Cubby described Formby as “...*the nearest piece of natural shore for some six million people this side of the Pennines.*”
- He emphasised that public access to the shore and woods would remain: “*I promise that the dog and the family will never be excluded...The Trust intends to give complete public access to the people of Formby.*”

# The National Trust's ongoing commitment...

- Cubby Acland was clear that much would be done to prevent abuse such as litter, damage and noise pollution; vehicles would also not be allowed on the foreshore.
- The work would go ahead as a continuous process leading to gradual improvement.
- Visitors were also required to pay for car parking to raise money to look after Formby Point. Initially, the cost was 2 shillings and sixpence per car (a season ticket cost £1 and 10 shillings).

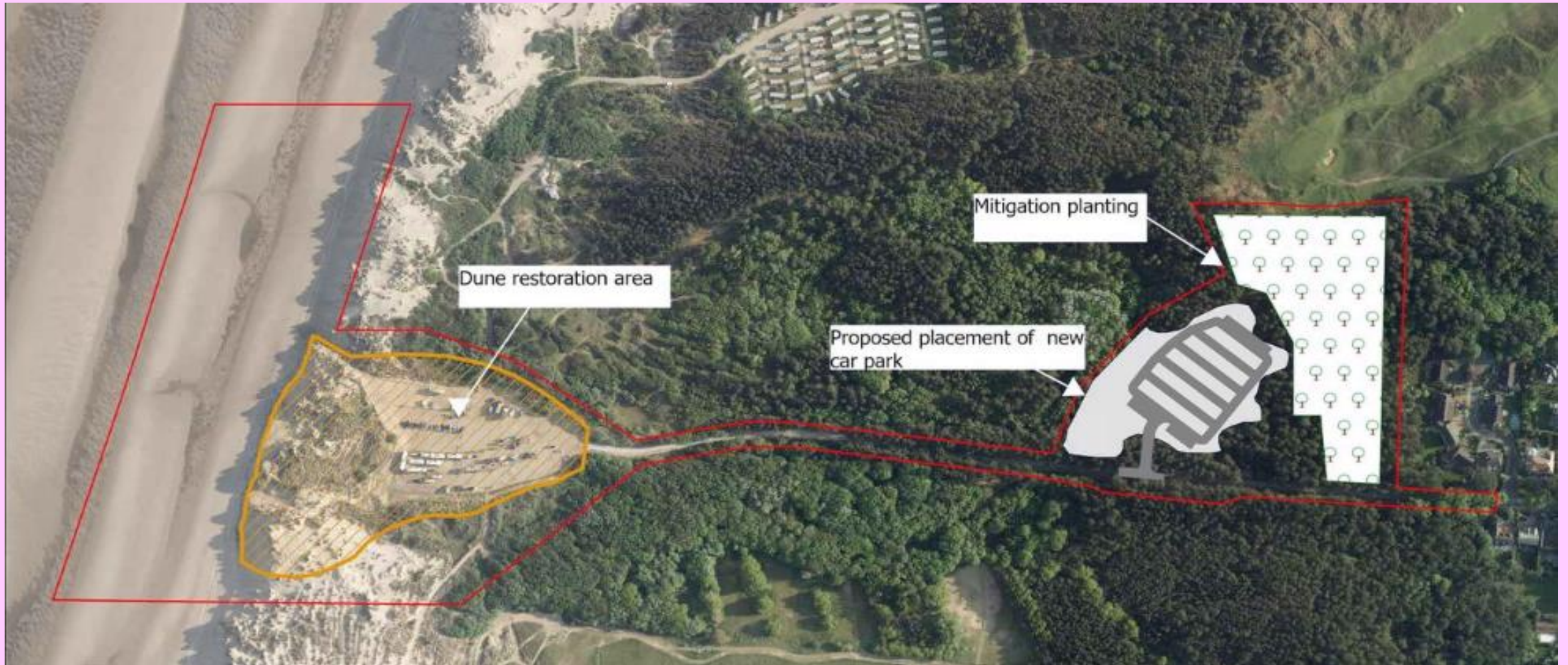
**Was Cubby Acland true to his word?**

**Have the National Trust continued their promises made in 1967?**



# What are the next steps?

## Current Projects at Formby National Trust





# Current National Trust Leaflet / Map of Formby

<https://nt.global.ssl.fastly.net/binaries/content/assets/websites/national/regions/liverpool-lancashire/places/formby/pdf/formby-map.pdf>



## Enjoy the outdoors and get closer to nature at Formby

### Walk Formby's dynamic coast

**Squirrel Walk**  
Circular walk of ½ mile – allow ½ hour

**Cornerstone Walk**  
A walk of ¾ mile via woodland picnic site and environmental playspace

**Asparagus Trail**  
Circular walk of 1½ miles

**Sefton Coastal Path**  
Up to 21 miles – plan to suit your ability

**Asparagus Cycle Trail**  
Road on the Coastal Path South of Victoria Road to Lifeboat Road – distance 1 ½ miles

**Boardwalk Path**  
This is the most accessible route to Formby beach from the Lifeboat Road car park

**NOTE:** All paths may have some sandy sections. Short sections of paths with 1:12 gradients



**Heritage Trails**  
The 'Lost Resort' and the 'Devils Hole' Trails are available to download from [www.nationaltrust.org.uk/formby](http://www.nationaltrust.org.uk/formby)



### You and your dog

We love four legged friends at Formby! Help us keep our site tidy by picking up after your pet – bagged waste can be put in any of our litter bins. Respect our wildlife, do not let your dog chase birds or animals and always keep them on a lead around squirrel walk. Please keep your dog under close control in all areas.



During the summer months lifeguards will attend the marked bathing waters at Lifeboat Road close to the Lifeguard Station.

- Key**
- ..... Squirrel Walk
  - ..... Cornerstone Walk
  - ..... Asparagus Trail
  - ..... Asparagus Cycle Trail
  - ..... Sefton Coastal Path
  - ..... Beach Entrance/Exit Points
  - Car Parking
  - Disabled Car Parking
  - Toilets
  - Disabled Toilets
  - Baby Changing Facilities
  - Picnic Table
  - ..... Path
  - ..... Sandy Dune Path
  - Information Board
  - Beach Marker
  - Dune Protection Area
  - Woodland
  - Dune Grassland
  - Sand Dune
  - Beach

Scale (metres approx.) 500

Based upon Ordnance Survey mapping with the permission of the Controller of HMSO © Crown Copyright. All rights reserved. National Trust No. 10022079/02020. Designed and produced by ABC Design & Communications, www.abcdesign.com

### Stay safe on the beach

- Beware of strong offshore winds
- Beware of strong currents
- Beware of deep gullies and fast incoming tides
- Beware of sharp objects - wear shoes
- Beware of suspicious objects
- Do not use inflatables
- Keep away from cliffs they may collapse
- Do not tunnel in the dunes
- No fires, no barbecues
- No motorized vehicles including quad bikes



### Your rubbish

- Dump it in the Bin
- Litter is dangerous
- Litter is costly
- Bag it, bin it, or take it home

### Come out and play

Follow us, like us #NTFormby for all our updates

### Get active outdoors

- Create some wild art
- Build a den
- Discover wild animal clues
- Make friends with a bug
- Go welly wandering



Visit: [www.50things.org.uk](http://www.50things.org.uk)

# Learning journey so far...

- Prehistoric footprints at Formby (**5000 BC**)
- Vikings (**900 AD**)
- Lifeboat Station (**1776 AD**)
- Railway (**1848 AD**)
- Formby by the sea (**1875 AD**)
- Formby asparagus (**1907 AD**)
- Formby Bypass (**1937 AD**)
- Formby National Trust (**1967 AD**)