

What does our data tell us? What is the biggest danger to Formby?



Success criteria

L.O - I can sort and analyse our data.

- I helped sort or display the data we collected.
- I explained what we found out from our fieldwork.
- I used vocabulary like "survey", "tally", "map", and "location" when sharing results.
- I reflected on what went well and what could be improved next time.



After your fieldwork

After you've carried out your fieldwork, you need to **analyse** your findings by looking carefully at them so you can understand them.

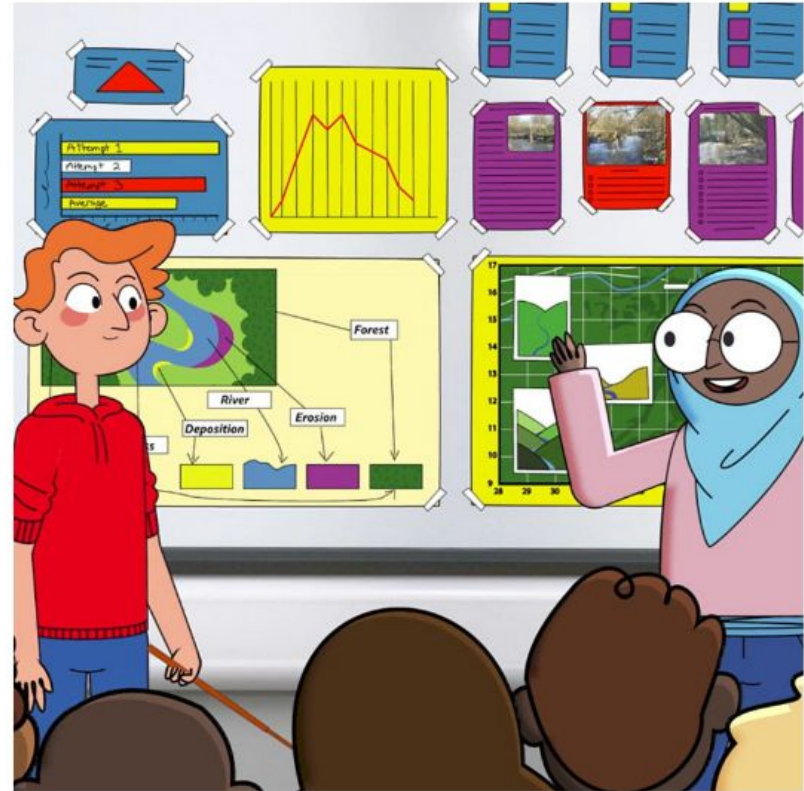
Then you're ready to **present** your findings and explain to others what you have found out.

You can **evaluate** your findings by deciding how well your investigation went, and how you could improve it next time.



How to analyse, present and evaluate

1. When you **analyse** your findings, you should:
 - look at all of them
 - try to understand them
2. When you **present** your findings to others, you should:
 - explain things clearly
 - add graphs to make it easier to understand
 - draw clearly labelled maps
 - put notes on photos
 - explain what you found out
3. When you **evaluate** your findings, you should:
 - think about how well you carried out your investigation
 - think about what you could do better next time



Watch: Presenting findings



Play the video to watch Ayesha and James present their findings to the class.

What to do step-by-step after your investigation



1. Analyse your findings by looking at your sketches and photos.

2. Draw graphs to make your findings easier to understand.

3. Show clear maps to explain your findings.

4. Show your carefully-drawn sketches.

5. Explain what you found out during your investigation.

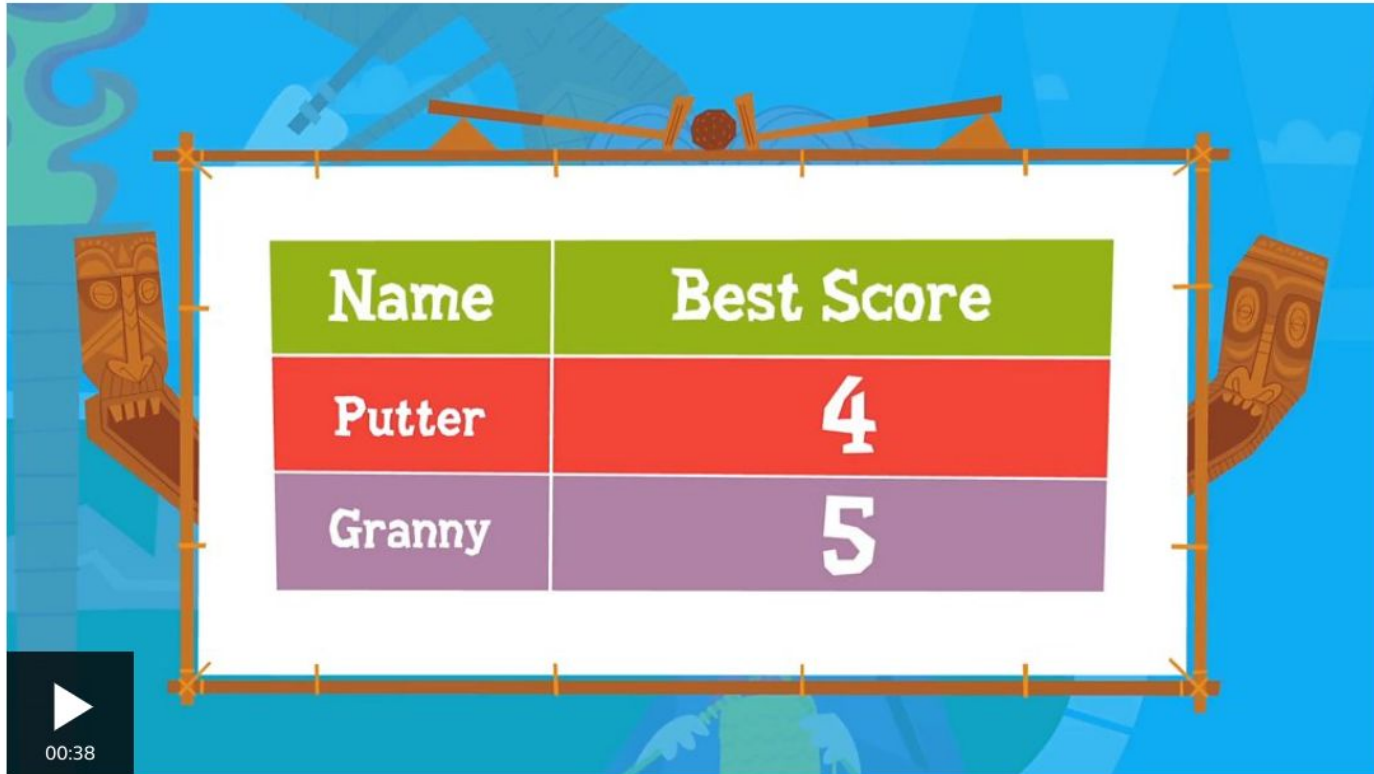
6. Think about how well your investigation went.

7. Think about what you could improve next time.

Watch: Using graphs and charts

Find out more about using graphs and charts to present data from **KS2 Maths**.

<https://www.bbc.co.uk/bitesize/topics/z27gf82/articles/zj3t7yc#zr9mtrd>



Name	Best Score
Putter	4
Granny	5

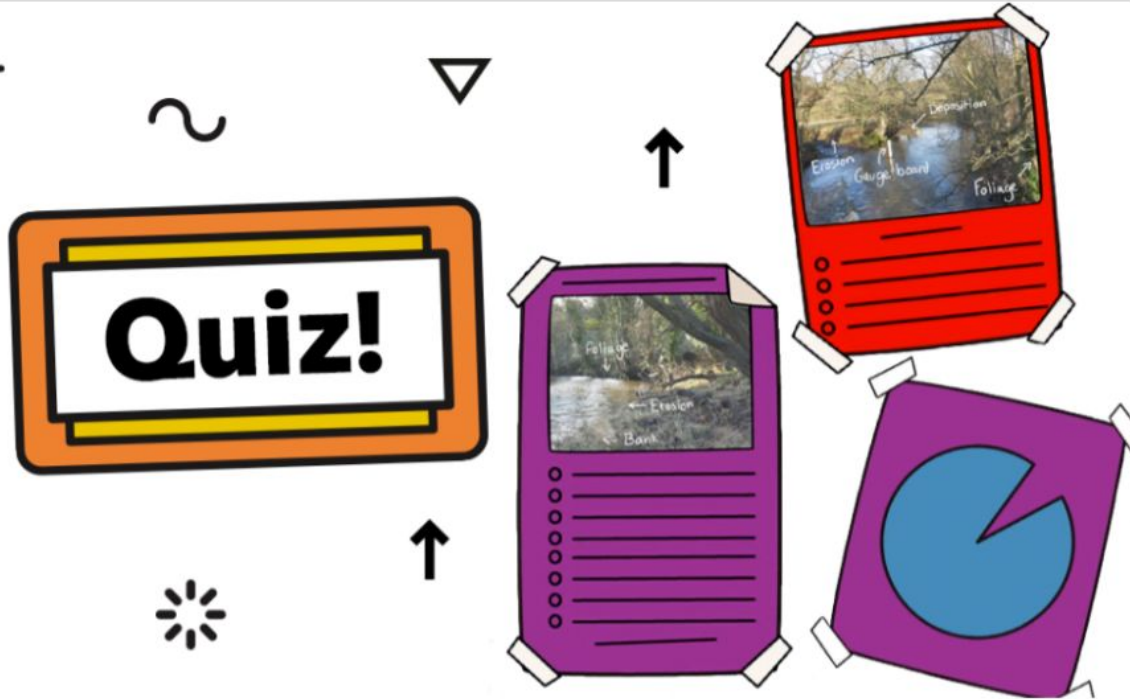
Evaluating questions

Evaluating your fieldwork is important so you can learn from it. These are some questions you may want to ask yourself:

- What went well in your fieldwork?
- Did you use the right tools?
- What would you do differently if you did the fieldwork again?
- What else do you want to find out?

Activity: Quiz – What to do after your fieldwork

<https://www.bbc.co.uk/bitesize/topics/z27gf82/articles/zj3t7yc#zr9mtrd>



How do you analyse, present and evaluate your findings?

Test your knowledge on what to do after a fieldwork investigation.

Start

Group Activity

Revisit their enquiry question - **What is the biggest danger to Formby?**

how can you find an answer/conclusion using the data you collected?

What conclusion does your data support?

Children create a presentation of their results to the class.

- Google slides (presentation).
- Google forms (present data collection).
- Google sheets (present data visually through graphs etc.)