

Formby Local Geography Topic

Lesson 3

What are the Human and Physical Features of Formby?

L.O - Use 4 and 6 figure grid references to locate certain human and physical features.

- I can identify the human and physical features of Formby
- I can use 4 and/or 6 grid references to mark locations on a map
- I can use 4 and/or 6 grid references to mark locations on a map

Key Vocabulary:

- Place
- Space
- Location
- Grid References
- Human Features
- Physical Features

Human and physical features

BBC Bitesize

<https://www.bbc.co.uk/bitesize/articles/zr8q7nb#:~:text=Human%20and%20physical%20features%20are,have%20been%20built%20by%20people.>

Activity 1:

Sort the features here into human and physical.

I can identify the human and physical features of Formby

Google Earth - Formby

<https://earth.google.com/web/search/formby/@53.55914643,-3.06752143,7.61028527a,89.54.7623023d,35y,-0h,0t,0r/data=CnEaRxJBCiUweDQ4N2IzYTU1NmM3NDM4MDE6MHhkMmNiOTA2Y2MwNWZmYTczGRGnk2x1x0pAlaWhRiHJjAJAKgZmb3JtYnkYAiABliYKJAnwOMQ6qstKQBFxTvVh78JKQBnsdT9NLpYHwCF0c6NUh50JwDoDCgEw>

https://www.youtube.com/watch?v=RNx0akt3_XI

Activity 2:

Use google earth to help identify and locate human and physical features of Formby.

Mark locations of human and physical features on a map

Possible resource

https://gridreferencefinder.com/#gr=SD2927707852|Point_s_A|1

Formby Local Geography Topic

I can use 4 and/or 6 grid references to mark locations on a map

BBC

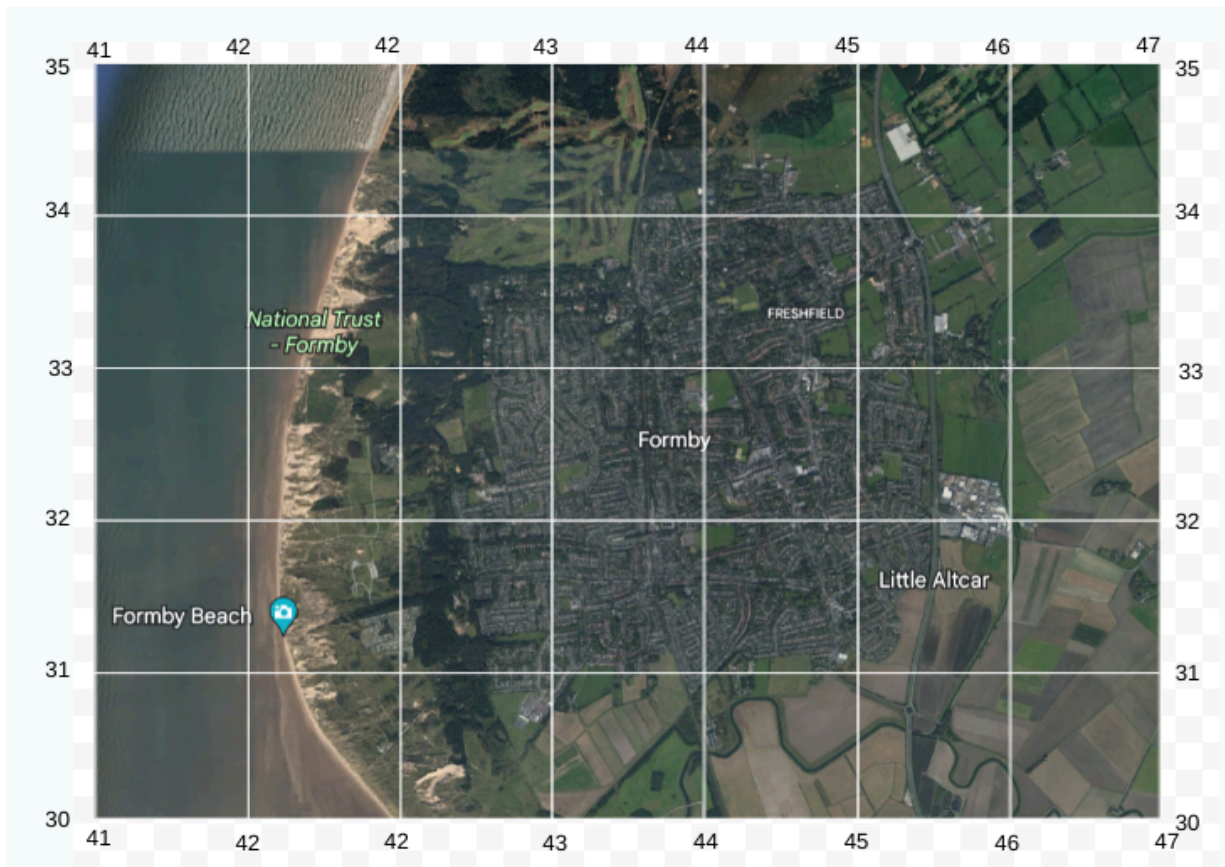
<https://www.bbc.co.uk/bitesize/guides/zp6kbqt/revision/5>

Possible digital resource

https://gridreferencefinder.com/#gr=SD2927707852|Points_A|1

Activity 3:

Children to use the map and grid and locate human and physical features of Formby.



Complete the table:

What is the feature?	Human or Physical?	Grid reference
Beach	Physical	422-325